



Welcome to  
St. Paul's Primary School  
EYFS 2024

ST. PAUL'S  
CHURCH OF ENGLAND  
PRIMARY SCHOOL

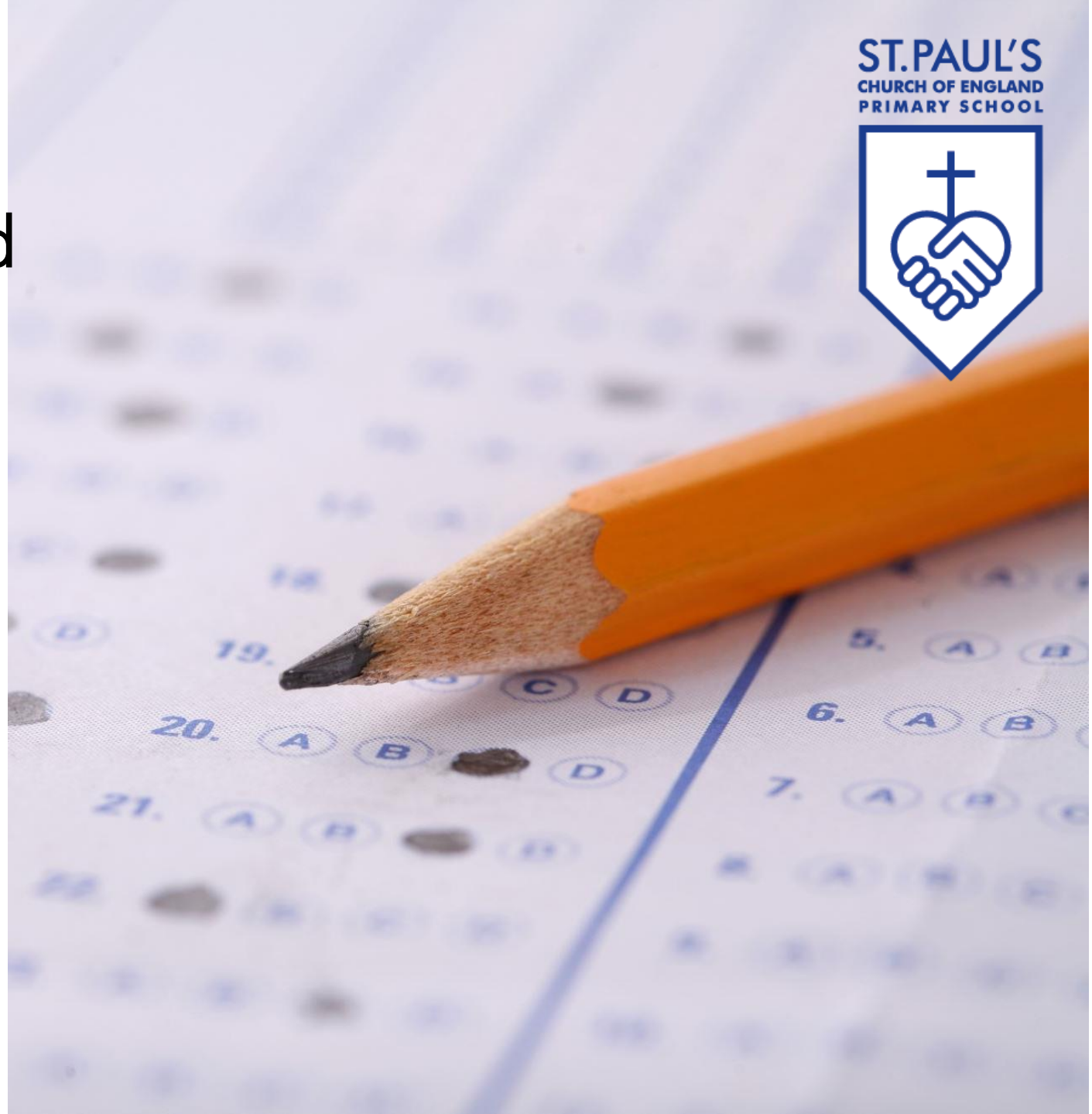




---

## Information for you and your child

- Transition Process
- Expectations and school readiness
- Daily routine
- Curriculum





---

# Transition

	1:15-2:15
Tuesday 11th June	Children from BFNS Rawtenstall/ Bambinos- parents will stay and meet Inclusion Manager
Tuesday 18th June	Children from BFNS Rawtenstall/ Bambinos
Tuesday 25th June	Children from other settings- parents will stay and meet Inclusion Manager
Tuesday 2nd July	Children from other settings

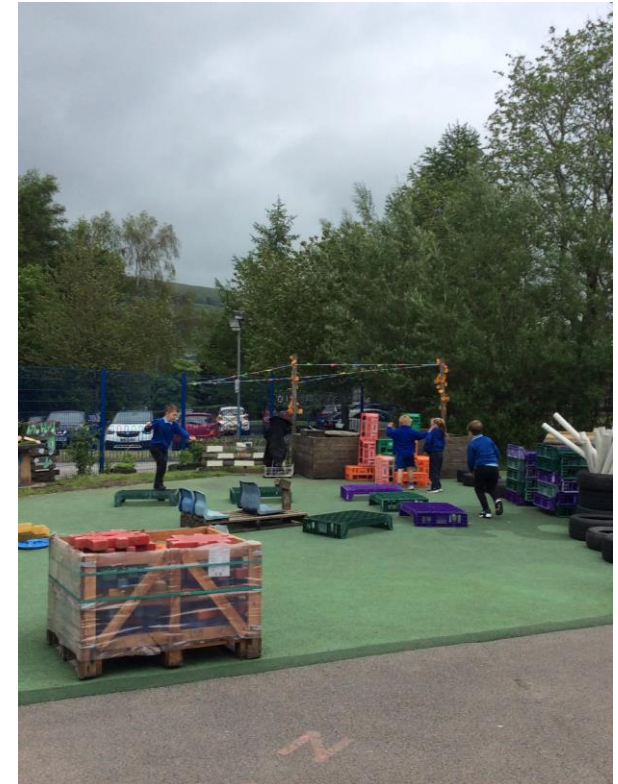
---

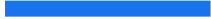
## School readiness

- Take own coats on and off
- Dress independently for forest school
- Toilet independently
- Use cutlery
- Turn take
- Hold books and pencils



# Daily Routine





	<i>Morning 9.30 - 11.30</i>	<i>Afternoon 1.05 - 3.05</i>
<i>Wednesday 4<sup>th</sup> September</i>  <i>In Forest School (with parents)</i>	<i>Children from BFNS Rawtenstall /Bambinos</i>	<i>Children from other settings</i>
<i>Thursday 5<sup>th</sup> September</i>  <i>In school - no parents</i>	<i>Children from BFNS Rawtenstall /Bambinos</i>	<i>Children from other settings</i>
<i>Friday 6<sup>th</sup> September</i>	<i>Children from BFNS Rawtenstall /Bambinos</i>	<i>Children from other settings</i>
<i>Monday 9<sup>th</sup> September</i>	<i>All children will do a full day. 8.45 - 3.10.</i>	



### Prime Areas

- ✦ Communication and Language
- ✦ Physical Development
- ✦ Personal Social and Emotional Development

### Specific Areas

- ✦ Literacy
- ✦ Mathematics
- ✦ Understanding the World
- ✦ Expressive Arts and Design

✦ Playing and exploring

✦ Active learning

✦ Creating and thinking critically

---

# Communication and Language

- Listening, Attention and Understanding
- Speaking





---

# Physical Development

- Gross Motor Skills
- Fine Motor Skills



---

# Personal, Social and Emotional development

- Self-Regulation
- Managing Self
- Building Relationships

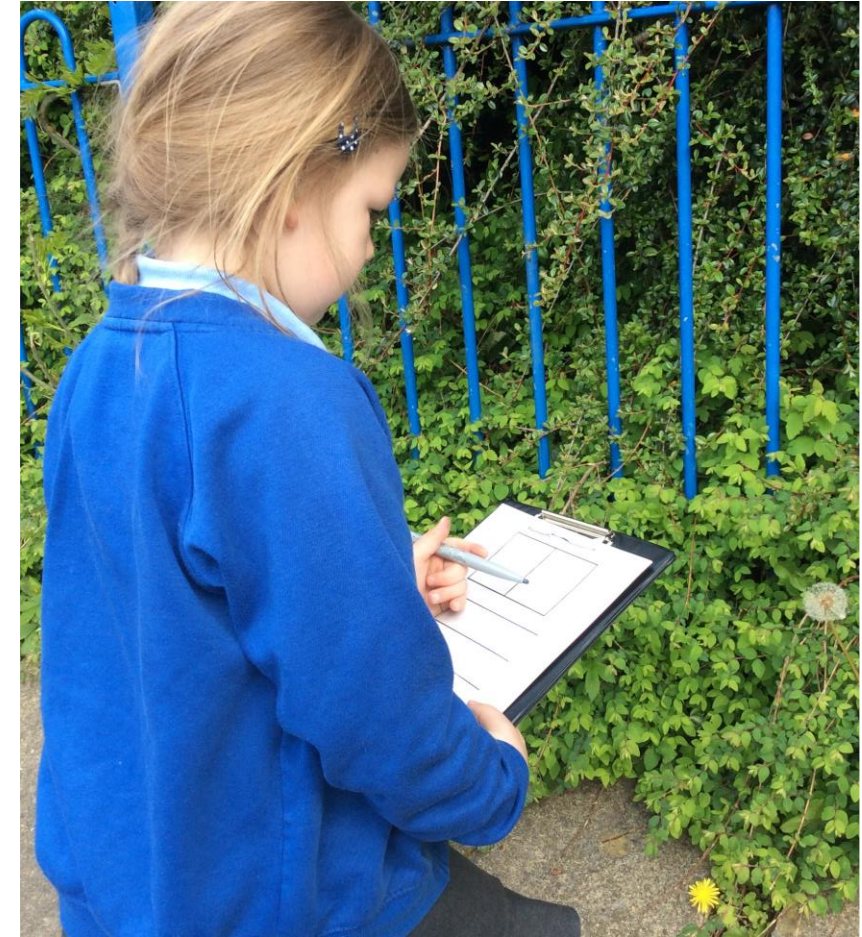
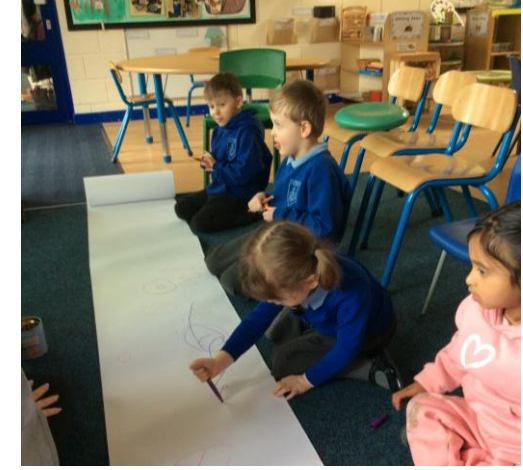


---

# Literacy

- Comprehension
- Word Reading
- Writing

*Daily phonics sessions teach the children how to read.*



---

# Mathematics

- Number
- Numerical Patterns



---

# Understanding the World

- Past and Present
- People Culture and Communities
- The Natural World

*Forest school session every two weeks.*



---

# Expressive Arts and Design

- Creating with Materials
- Being Imaginative and Expressive





# Classes





## Collective Worship/Links to Church

Our Church is very important and we visit Church throughout the year and lead services. We have worship everyday in school, that is led by staff and children.







ST. PAUL'S CHURCH OF ENGLAND PRIMARY SCHOOL  
Calder Road, Rawtenstall, Lancashire, BB4 8HW  
Headteacher: Mrs Charlesworth  
[head@constablelee.lancs.sch.uk](mailto:head@constablelee.lancs.sch.uk)  
School Office: 01706 215893



## School Holidays 2023/2024

### AUTUMN TERM 2023

Staff Training Day	Friday 1 <sup>st</sup> September 2023
Re-open	Monday 4 <sup>th</sup> September 2023
Mid Term Closure	Monday 23 <sup>rd</sup> October - Friday 27 <sup>th</sup> October 2023 (inclusive)
Re-open	Monday 30 <sup>th</sup> October 2023
Closure after school on	Wednesday 20 <sup>th</sup> December 2023
Staff Training Days	Thursday 21 <sup>st</sup> and Friday 22 <sup>nd</sup> December 2023

### SPRING TERM 2024

Re-open	Monday 8 <sup>th</sup> January 2024
Mid Term Closure	Monday 12 <sup>th</sup> February - Friday 16 <sup>th</sup> February 2024 (inclusive)
Re-open	Monday 19 <sup>th</sup> February 2024
Closure after school on	Thursday 28 <sup>th</sup> March 2024

### SUMMER TERM 2024

Re-open on	Monday 15 <sup>th</sup> April 2024
Staff Training Day	Friday 3 <sup>rd</sup> May 2024
May Day Closure	Monday 6 <sup>th</sup> May 2024
Mid Term Closure	Monday 27 <sup>th</sup> May - Friday 31 <sup>st</sup> May 2024 (inclusive)
Re-open on	Monday 3 <sup>rd</sup> June 2024
Closure after school on	Friday 19 <sup>th</sup> July 2024
Staff Training Day	Monday 22 <sup>nd</sup> July 2024



*Thank You...*